



Director's Report

66th Meeting of the **National Advisory Council on Minority Health and Health Disparities**

May 31, 2024

Eliseo J. Pérez-Stable, M.D.

**Director, National Institute on
Minority Health and Health Disparities**

eliseo.perez-stable@nih.gov



NIH Leadership Update

Fogarty International Center (FIC) Director

Kathleen M. Neuzil, M.D.

- Associate Director for International Research, NIH
- First woman selected Director, FIC
- Served as Professor in Vaccinology, Director of the Center for Vaccine Development and Global Health and Chief of the Division of Geographic Medicine at the University of Maryland School of Medicine, Baltimore



NIH Leadership Update

Center for Information Technology Director

Sean Mooney, Ph.D.

- Served as a Professor of biomedical informatics and medical education at the University of Washington (UW) School of Medicine
- Acted as Chief Research Information Officer, Interim Director for the UW Institute for Medical Data Science and Director of informatics for the UW Institute of Translational Health Sciences
- Expertise in bioinformatics and implementing multi-faceted research leveraging clinical data



NIH Common Fund Program to Support Clinical Research in Primary Care Settings

- Establish a **primary care-focused** clinical research network that is disease-agnostic, facilitating clinical research in **mission areas across all ICs**
- **Integrate innovative research** with routine clinical care in clinical care settings
- Create a foundation for sustained **engagement with communities underrepresented in clinical research**
- ✓ **Anticipated Budget:** OD funds \$5M in FY24, \$25M in FY25; anticipate ramp up of ~\$50M–\$100M/year
- ✓ **Timeline:** Gather feedback + applications due June 14 ([OTA-24-016](#)) → Quick launch in 2024 → Expand



National Institute
on Minority Health
and Health Disparities



OMB Directive 15: Updates to Racial and Ethnic Classifications by Census

- Collect data using a single combined race and ethnicity question
- Added Middle Eastern or North African
- 7 categories of race and/or ethnicity—check all that apply
 - ☐ American Indian or Alaska Native
 - ☐ Asian
 - ☐ Black or African American
 - ☐ Hispanic or Latino
 - ☐ Middle Eastern or North African
 - ☐ Native Hawaiian or Pacific Islander
 - ☐ White
- Requires collection of more detail to include national heritage — more detailed categories optional
- Requires agency Action Plans on Race and Ethnicity Data

Learn more: [Revisions to OMB's Statistical Policy Directive No. 15](#)



National Institute
on Minority Health
and Health Disparities



HHS Action Plan to Advance Equity

HHS released the [2023 Equity Action Plan](#) which highlights:

1. Prevent neglect and improve care to help children thrive in their families and communities
2. Promote accessible and welcoming health care
3. Improve maternal health outcomes for rural, racial, and ethnic minority communities
4. Prioritize the behavioral health of underserved populations
5. Increase clinical research and trial diversity to support innovation



NIH Health Equity Factsheet

- HHS agencies released health equity factsheets outlining significant accomplishments to date
- **NIH factsheet, developed by NIMHD, highlights:**
 - ❑ Health equity goals aligned with the NIH Minority Health and Health Disparities Strategic Plans
 - ❑ Includes NIH policy and culture changes, health equity research priorities, and research sustaining activities
 - ❑ Key accomplishments across NIH



Access the [NIH Health Equity Factsheet](#) on NIMHD Website



Vivek H. Murthy Distinguished Lecture Series for Public Health Leadership

May 23, 2024

Hosted by NIMHD in celebration of Asian American, Pacific Islander, and Native Hawaiian Heritage Month

- **Title:** Fostering Social Connection to Enhance Health and Well-being
- **Moderator:** Monica Webb Hooper, Ph.D., Deputy Director, NIMHD
- **Guest Speaker:** Hahrie Han, Ph.D., Professor and Inaugural Director of the Stavros Niarchos Foundation Agora Institute at Johns Hopkins University



View on [NIH Videocast](#)



NIH Mental Health National Youth Essay Contest

Essay contest that challenges high school students ages 16-18 years to raise awareness of mental health

- Sponsored by NIMHD, NIMH, and NICHD
- Awarded 24 finalists with gold, silver, bronze, and honorable mention prizes
- 370 submissions – 33 states
- Essays addressed topics, such as stigma, trauma, resilience, equity, anxiety, and more



Learn more: [NIH Teen Mental Health Essay Contest](https://nimhd.nih.gov/EssayContest)



The All of Us Research Program

- *Opportunity to Enhance the Diversity of U.S. Biomedical Research* is published in the Nature Medicine journal, February 2024
- Co-authored by 27 NIH Institute and Center directors and other leaders
- Commentary notes the impact of the historic lack of diversity in medical research and emphasizes how *All of Us* is well positioned to advance precision medicine



National Institute
on Minority Health
and Health Disparities



NIMHD Appropriations FY2024

- **Bill to fund NIH was signed into law on March 23, 2024, by President Biden**
- **NIH Budget was generally flat**
- **New directives to NIMHD from FY2024 appropriations report language:**
 - ❑ NIMHD-led initiative for improving Native American Cancer Outcomes in collaboration with NCI – \$6M
 - ❑ NIMHD Office on Native Hawaiian and Pacific Islander Health Research – \$4M



National Institute
on Minority Health
and Health Disparities



NIMHD Budget Update

NIMHD Appropriations by Fiscal Year



Source: https://officeofbudget.od.nih.gov/approp_hist.html



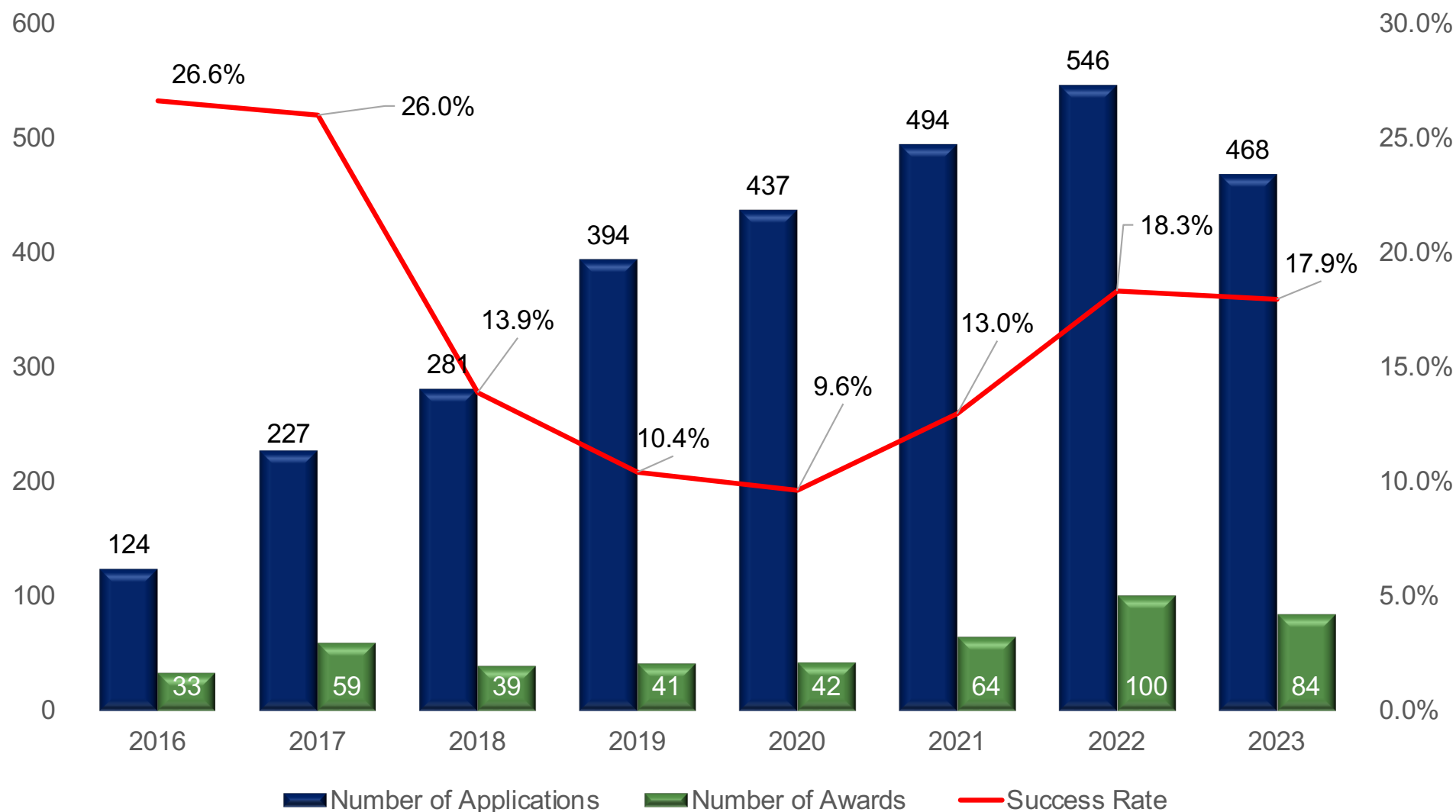
National Institute
on Minority Health
and Health Disparities



R01 Applications to NIMHD, 2016-2023

Fiscal Year	Number of Applications	% Change Over Previous FY	Success Rate
2023	468	−14.3%	17.9%
2022	546	10.5%	18.3%
2021	494	13.0%	13.0%
2020	437	10.9%	9.6%
2019	394	40.2%	10.4%
2018	281	23.8%	13.9%
2017	227	83.1%	26.0%
2016	124	−23.5%	26.6%

R01 Competing Applications, Awards, and Success Rates



*As of May 1, 2024



R01 Applicant Award Rates FY2020-2022 and FY2023

	Early-Stage Investigators		Established Investigators	
	FY2020-22	FY2023	FY2020-22	FY2023
Total	445	150	503	149
Awarded	79	32	111	38
Award Rate	17.8%	21.3%	22.1%	25.5%



National Institute
on Minority Health
and Health Disparities



Legislative Updates: Briefings to Congressional Staff

February 7, 2024: Eliseo Pérez-Stable, M.D., and Lawrence Tabak, D.D.S., Ph.D., briefed staff from **Senate Health, Education, Labor, and Pensions (HELP)** and the **Senate Aging** committees on the implementation of people with disabilities as a population with health disparities

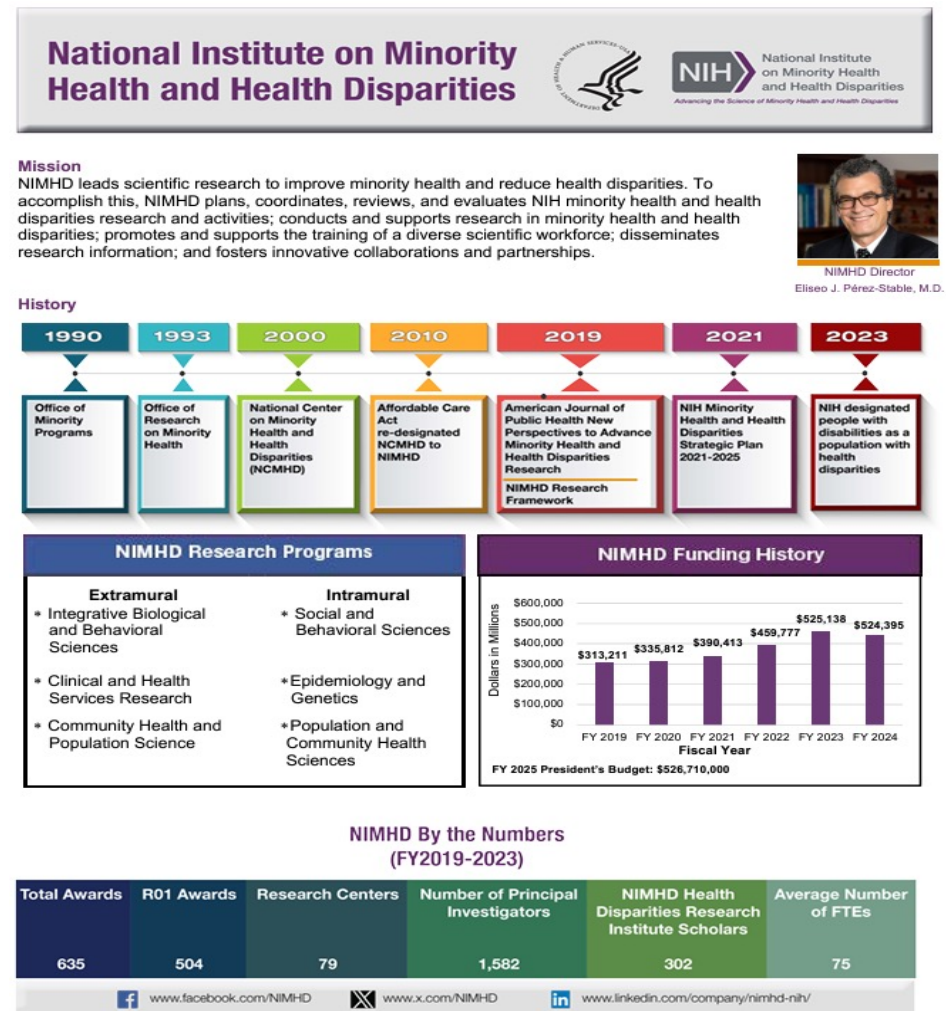
Research, Condition, and Disease Categorization (RCDC) Briefing on Changes to Minority Health and Health Disparities categories

- **March 6, 2024:** Drs. Pérez-Stable, Tabak, and Marie Bernard, M.D., briefed staff from **Senate HELP** and **House Energy and Commerce** committees
- **March 15, 2024:** Drs. Pérez-Stable and Bernard briefed staff from the **Congressional Black, Hispanic, and Asian Pacific American Caucuses**



NIMHD FY2025 Congressional Budget Justification

- As part of the budget process, NIMHD submitted an annual justification with budget request
- Published March 11, 2024
- NIMHD's Congressional justification outlines:
 - ☐ Funding needs
 - ☐ Strategic priorities
 - ☐ Anticipated impact of NIMHD's priorities for the upcoming fiscal year



View the [NIMHD FY2025 Congressional Budget Justification](#)

NIMHD Leadership Engagements

February 2024

- Florida International University
- League of United Latin American Citizens
- American Medical Women's Association



March 2024

- Broad Institute
- University of Michigan Institute for Healthcare Policy and Innovation
- Rutgers Biological and Health Sciences



NIMHD Leadership Engagements

April 2024

- National Medical Association Colloquium
- Congressional Hispanic Caucus Institute Hill briefing
- ACT for NIH Foundation



May 2024

- OmahaCARES, Delta Sigma Theta Sorority, Inc. and University of Nebraska at Omaha
- MANA and LATINO Magazine Capitol Hill forum on Latina Health



White House Minority Health Forum April 18, 2024

- Hosted by the Office of Science and Technology Policy
- Working sessions to understand and advance bold, new efforts to reduce health disparities
- Topics included:
 - Addressing cancer disparities from screening to survivorship
 - Public health, access to care, and social drivers of health
 - Community-driven solutions to structural and environmental drivers of disparities
 - Equity in innovation and research



The Children's Inn at NIH: Leadership and Momentum in Advancing Health Equity Webinar

April 17, 2024

Eliseo Pérez-Stable and NIMH Deputy Director Shelli Avenevoli highlighted NIH initiatives:

- Speaking Up About Mental Health teen national essay contest
- Research on youth mental health
- Adolescent Brain Cognitive Development Study

Moderator: Dr. Philipia Hillman, Founder, The October Group

Other Panelists:

- Victoria D. Ojeda, Ph.D., Professor of Public Health, UCSD
- Jennie Luca, Chief Executive Officer, The Children's Inn at NIH
- Representative Robin L. Kelly, D-Illinois, 2nd District



Learn more and watch the recording [here](#)



NIMHD Fireside Chat with the Honorable Louis W. Sullivan, M.D.

April 22, 2024

- In commemoration of National Minority Health Month
- Celebrated history of NIMHD and Dr. Sullivan's seminal role in the founding of NIMHD
- Discussed his dedication to increasing racial, ethnic, and gender diversity in scientific workforce and legacy of improving health outcomes for underserved communities.



View the [NIH Webcast](#)



Research Centers in Minority Institutions (RCMI) Annual Meeting: April 29 - May 1, 2024

RCMI program grantees brought together U54 PI/PDs and other senior scientists, research project leaders, RCMI scholars, key community partners, and NIH staff to discuss opportunities for collaboration and strategies for solving shared challenges.

- Over 400 participants including:
 - Leadership from NIMHD, Chief Officer for Scientific Workforce Diversity, NIGMS, NHLBI, NCI, and NIDA leaders
- NIMHD leaders met with RCMI university presidents and principal investigators
- Included plenary sessions, concurrent scientific workshops, and poster presentations



[View agenda:](https://rcmicnf.com/Support_Files/RCMI24-Draft-Agenda.pdf)
https://rcmicnf.com/Support_Files/RCMI24-Draft-Agenda.pdf



Centers of Excellence on Environmental Health Disparities Annual Grantee Meeting

February 22-23, 2024

- Meeting held at National Institute on Environmental Health Sciences (NIEHS) campus with a panel of IC Directors
- Hosted by the Maternal and Infant Environmental Health Riskscape Research Center at Baylor College of Medicine
- Brought together grant recipients from 3 centers to share research, investigator development endeavors, and community engagement efforts
- Discussed ways of reducing health disparities resulting from disproportionate exposure to environmental harms



Centers funded by NIMHD, NIEHS and NICHD



Workshop on Research on Native Hawaiian and Pacific Islander Health

February 13-14, 2024

- Researchers and community advocates for NHPI health to identify critical health topics and needs, gaps in knowledge, and future opportunities for research to reduce health disparities in NHPI populations
- **Organized into four sessions:**
 - Determinants of NHPI Health
 - Mechanisms/Processes of Health Outcomes,
 - Methodologic Approaches/Tools for NHPI Health
 - Cultural Interventions to Improve NHPI Health
- **Several points were identified, including importance of and need to:**
 - Enhance social determinants of health data collection
 - Develop culturally valid assessment tools and tailored interventions
 - Enable community-driven research and community participation for successful community-academic partnership



2024 Health Disparities Research Institute

August 5-9, 2024

- A week-long intensive and engaging training experience in person
- Supports the research career development of promising early-stage investigators interested in minority health and health disparities research
- Attend lectures with leading researchers in minority health and health disparities
- Participate in mock grant reviews
- Meet with NIH scientific program staff that manage health disparities research across NIH Institutes and Centers.
- Receive consultation on a research idea for a future NIH grant submission (K, R01, R21).



Fostering the next generation of researchers in minority health and health disparities

Questions: HDRI@nih.gov

[Learn More](#)



Medical School Enrollment and Graduates, and U.S. Physicians by Race/Ethnicity and Year

	Medical School Enrollment (%) 2022-2023	Medical School Graduates (%) 2021-2022	U.S. Physicians (%) 2021
AI/AN	184 (<1%) -21	26 (<1%)	2,583 (<1%) -918
Asian	23,294 (24%) +4%	4,680 (22%)	173,283 (21%) +9%
Black/African American	8,017 (8%) +4%	1,464 (7%)	48,248 (6%) +1%
Latino/Hispanic	6,542 (7%) +1%	1,302 (6%)	58,395 (7%) +1%
Native Hawaiian/PI	75 (<1%)	20 (<1%)	961 (<1%)
White	43,818 (45%) -11%	10,747 (51%)	537,351 (64%) +8%
Other	2,063 (2%)	381 (2%)	9,299 (1%)
Multiple	10,307 (11%)	1,973 (9%)	11,202 (1%)
Unknown	845 (<1%)	175 (<1%)	108,336 (13%)
Total*	96,520	21,051	841,322

*Column totals do not add up to 100% because category "Non-U.S. Citizen and Non-Permanent Resident" is missing

www.aamc.org



Science Advances



National Institute
on Minority Health
and Health Disparities



The Hózhó Randomized Clinical Trial

- Telephone-based guideline-directed medical therapy optimization in Navajo Nation
- American Indian patients with reduced ejection fraction heart failure (24% - 36%), cared for at two IHS facilities
- N=103; 41% female; median age=65 years
- Stepped-wedge, pragmatic comparative effectiveness trial (Feb- Aug 2023) tested telehealth model for vs. usual care
- Phone-based telehealth model: Therapy is initiated and titrated at home using remote telemonitoring
- Outcome: Increase in recommended classes of drugs filled from the pharmacy at 30 days
- **Intervention increased main outcome: 66.2% vs. 13.1% with OR=12.99; NNT was 1.88**

Eberly, L.A. et al., [JAMA Internal Medicine](#), 2024



Historic Redlining and Impact of Structural Racism on Diabetes Prevalence

11,375 U.S. census tracts were examined using three datasets:

- CDC PLACES 2019 data on diabetes prevalence
- Home Owners' Loan Corporation maps from the Mapping Inequality project for redlining data
- Opportunity Insights database for census data on social determinants of health

Structural equation modeling revealed:

- Direct association between redlining and diabetes prevalence
- Indirect association via incarceration, poverty, discrimination, substance use, housing, education, unemployment, and food access

Egede, L. E. et al., [Diabetes Care](#), 2024



Practice Facilitation and Peer Coaching for Uncontrolled Hypertension

- Black adults with persistently uncontrolled hypertension attending 69 rural primary care clinics in Alabama and North Carolina
- N=1,209; 62% female; mean age=58 years
- **Peer Coaching (PC)**: Self-management program via telephone
- **Practice Facilitation (PF)**: Facilitators helped clinics implement 4+ quality improvement projects designed to improve BP control
- **Enhanced Usual Care (EUC)**: Clinics received patient education system, home BP monitoring machines, binder of practice tips
- Cluster randomized clinical trial (Sept 2016- Sept 2019) tested EUC alone vs EUC with PC, PF, or PCPF.
- Main outcome: proportion with BP <140/90 mm Hg
- **No effects on BP control by intent to treat; for participants <60 years, PC and PCPF vs EUC alone led to 5 mm Hg greater reduction in systolic BP**

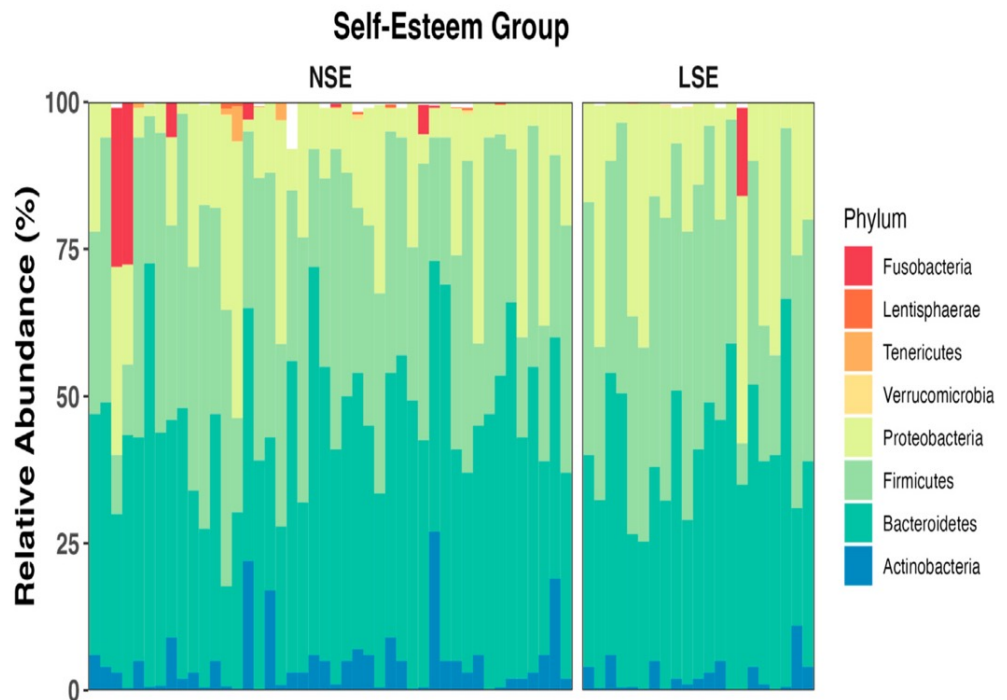
Safford, M. M. et al., [JAMA Internal Medicine](#). 2024



Reported Self-Esteem Linked to Immunometabolism Among NHPI Adults

- Interrelationships among gut microbiome, epigenetic regulation of inflammation, and self-esteem in a cohort of Oahu residents (N=68), mostly NHPI adults, using blood and stool samples, diabetes status, and self esteem (SE) ratings
- Compared to persons with normal SE, those with low SE had:

□ **Higher levels of biomarkers linked to inflammatory disease, differences in relative abundance of specific gut bacteria, and differences in DNA methylation within the white blood cells at specific loci**



✓ *Findings provide targets for potential therapeutics, biomarker discovery, and disease prevention strategies among NHPIs.*

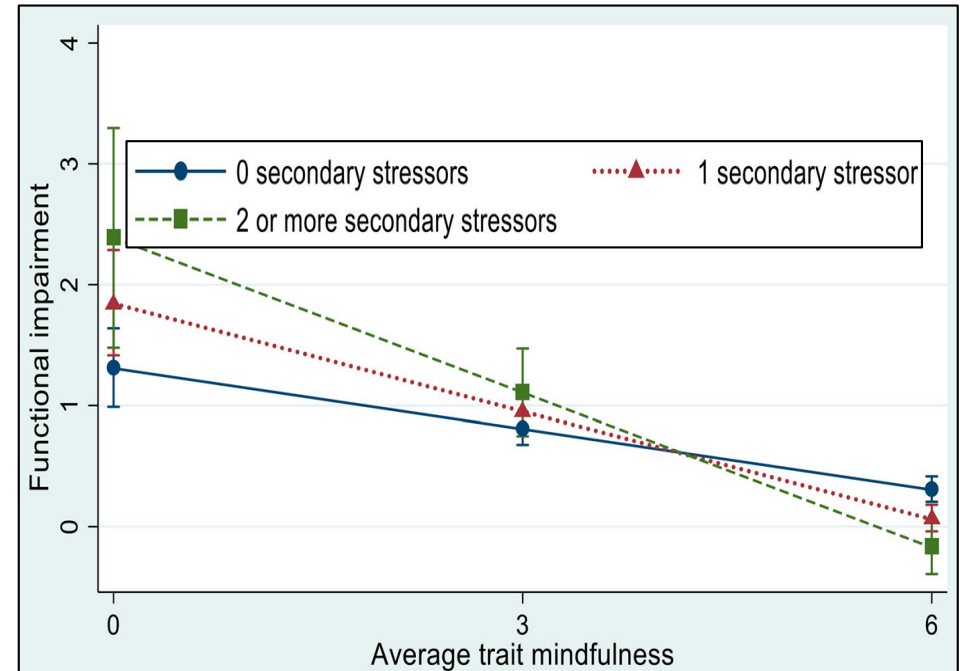
Grant No. R01 MD016593

Becerra, C.Y. et al., [Front Genet.](#) 2023.



Trait Mindfulness (TM) as a Protective Factor for Collective Trauma

- Study examined how TM influenced distress and resilience among 1,846 U.S. Gulf Coast residents exposed to catastrophic hurricanes; participants were surveyed twice during the COVID-19 pandemic
- **More severe posttraumatic stress symptoms related to lower TM, greater COVID-19 exposure, history of anxiety/depression, Latino ethnicity, lower income, and older age**
- **TM moderated the effects of COVID-19-related secondary stress (i.e., job loss) on global distress and functional impairment over time.**
- ✓ *TM may increase resilience and recovery from collective traumas, especially among populations with multiple trauma exposure.*



Moderating effect of TM on COVID-19 secondary stressors and functional impairment



Maternal Adverse Childhood Experiences Linked to DNA Methylation in Newborns

- Study examined association of maternal adverse childhood experiences (ACEs)—among 232 pregnant women with self-reported discrimination and financial stress—with methylation status within 8 imprinted differentially methylated regions involved in proper development and growth
- **Discrimination was associated with** hypermethylation of growth factor (**IGF2**) and **NNAT** (proteolipid important for neuronal differentiation) **in Latino newborns and hypomethylation of PEG3 gene**, a growth rate regulator, **in Black newborns**
- **Financial stress was associated with hypermethylation of MEG3-IG gene in White newborns**
- ✓ *Maternal ACEs and other social stressors may influence DNA methylation of several imprinted genes in newborns, further studies of gene expressions are needed.*



Traditional Diet Related to Lower Hepatic Steatosis in U.S. Born Mexican Americans

- Examined link between traditional Mexican diet and hepatic steatosis and fibrosis in Mexican Americans who are overweight/obese with body mass index (BMI) ≥ 25 kg/m²
- Dietary recall, nativity, and Fibroscan® data from 280 Mexican Americans (102 males; 84 U.S. born)
- **Birthplace and PNPLA3 risk allele carrier status modified relationship between traditional Mexican diet and steatosis**
- **Adherence to traditional Mexican diet associated with lower hepatic steatosis among U.S. born**
 - ☐ Analyses by sex, significant among U.S. born men
 - ☐ Greater traditional Mexican diet adherence related to lower hepatic steatosis score
- ✓ *Findings highlight considerations for liver disease prevention and management interventions among Mexican Americans.*



Managing Hypertension in South Asians With Diabetes

- DREAM Atlanta tested the effectiveness of a culturally tailored community health worker (CHW) intervention in a feasibility trial, followed by a randomized control trial (RCT)
- RCT among 190 participants with diabetes.
Control (N=93): Baseline/endpoint surveys, 1 virtual group session facilitated by CHW.
Intervention (N=97): Control condition plus 4 virtual group sessions, action plan, CHW monthly 1:1 phone follow up
- **Intervention was feasible and significantly increased BP control in intervention (33.7%) and control (16.5%) arms.**
- ✓ *A CHW-led culturally tailored telehealth intervention is both feasible and effective in managing hypertension in South Asian individuals with diabetes.*



DREAM Atlanta (Diabetes, Research, Education, and Action for Minorities)

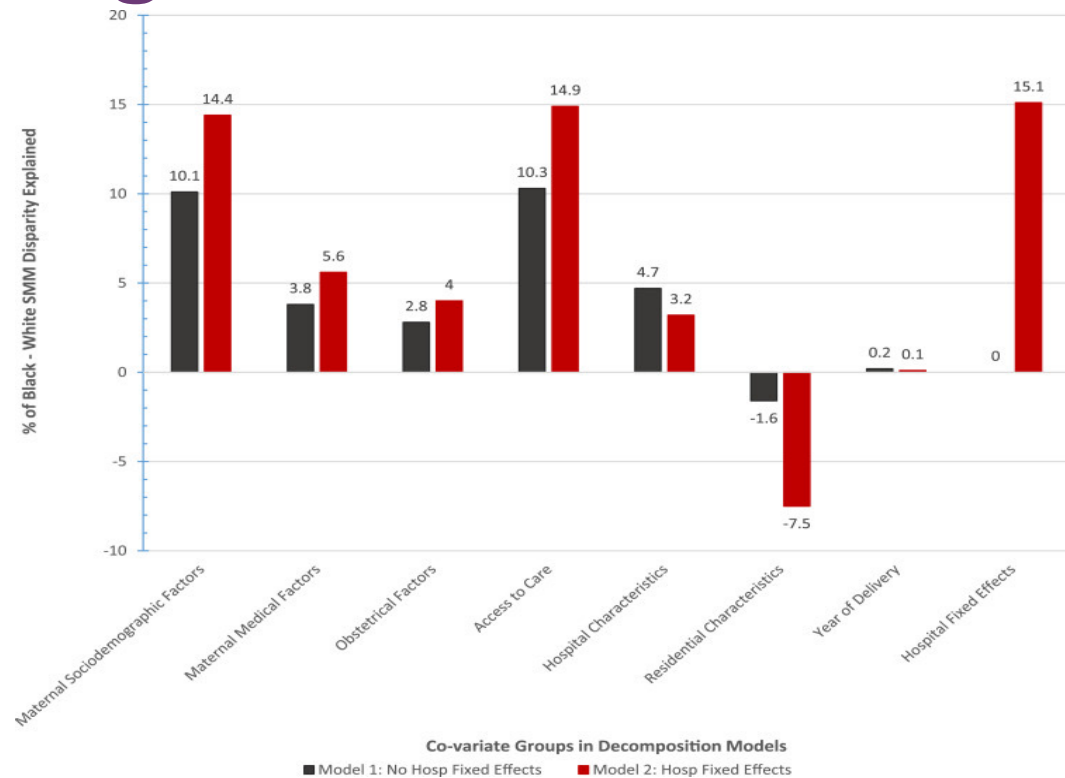
Grant No. K23MD015088

Shah, M. K., et al., [J Gen Intern Med](#). 2023



Black-White Disparity in Severe Maternal Morbidity in Georgia, 2016-2020

- Study examined hospital, residential, maternal, and other factors
- Data from Georgia's hospital discharge, birth, and fetal death records for 2016-2020
- **Rate of severe maternal morbidity per 100 discharges was 3.15 among Black and 1.73 among White individuals**



- **Hospital fixed-effects explained largest portion of the Black-White gap (15.1%), followed by access to care (14.9%), sociodemographic factors (14.4%), and residential factors protective for Black individuals (-7.5%)**
- ✓ *Racial differences in care processes and other factors within the same hospital translate into disparities in severe maternal morbidity.*

Grant No. R01MD016031

Adams, K. E., et al., [AJOG Global Reports](#). 2024



Pregnancy Hypertension Linked to Future Heart Structure Abnormalities Among Latinas

- Study compared echocardiographic measurements in 724 Latinas with, and 4,444 Latinas without, a history of hypertensive disorders of pregnancy (HDP) enrolled in the Hispanic Community Health Study/Study of Latinas
- **Women with a history of HDP had higher prevalence of abnormal left ventricle structure and function during midlife**
- **Having a history of HDP was a stronger risk factor for heart structure abnormalities than presently having hypertension**
- ✓ *Abnormal left ventricle geometry is a predictor of heart failure, ischemic heart disease, and cardiac death*
- ✓ *Prevention of HDP should be actively addressed during the pre-conception and prenatal care of Latinas*

Contract Nos. N01-HC-65233; N01-HC-65234;
N01-HC-65235; N01-HC-65236; N01-HC-65237

Quesada, O., et al., [Hypertension](#). 2024.



Mental Health Care Use by Latino Patients in a Community Health Center Network

- Retrospective review of medical records of 1,498,655 patients who received care between 2012-2020
- Estimated likelihood of receiving mental health services
- **14.4% (N=215,098) received mental health services**
- **Spanish-preferring Latino patients had a significantly lower rate than White patients of mental health visits—an estimated annual rate of 0.59**
- ✓ *Latino populations have rates of psychiatric diagnoses similar or higher than White individuals but are less likely to receive mental health treatment*

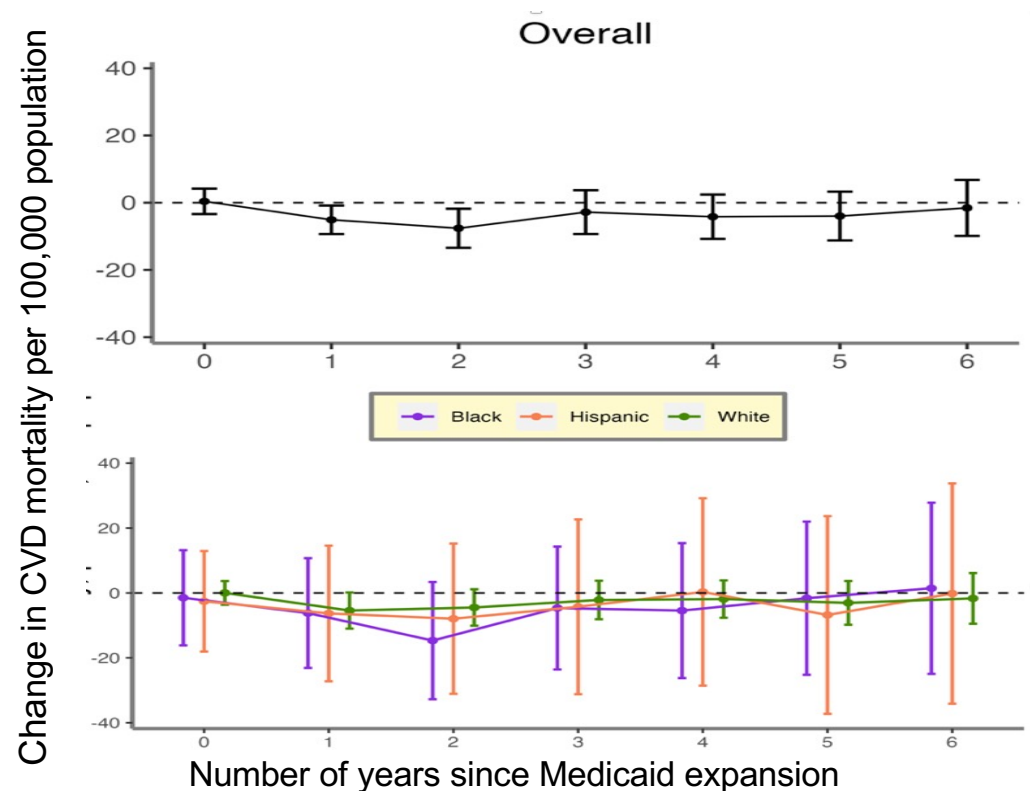


Impact of Medicaid Expansion on Racial/Ethnic Disparities in Cardiovascular Diseases

- Examined the effect of Medicaid expansion on CVD mortality by race and ethnicity
- Data from 2000–2019 behavioral risk factor surveillance system (BRFSS) and the CDC's Wide-ranging Online Data for Epidemiologic Research

- **Medicaid expansion was associated with a reduction in CVD mortality overall, and in White, Black, and Latino subpopulations**

✓ *No difference or disparity in the effect of Medicaid on CVD across race–ethnicity subpopulations*



Grant No. 1K01MD014163-01A1

Nianogo, R. A., et al., [Epidemiology](#). 2024



Refined Measures for HIV Testing and PrEP Among Latino Sexual Minority Men

- Tools to measure multilevel barriers and facilitators to PrEP use and HIV testing and among 290 Latino sexual minority men – 10 barrier and 7 facilitator factors were identified:

<i>PrEP Use Barrier Scales</i>	<i>HIV Testing Barrier Scales</i>
Lack of PrEP Knowledge	Lack of HIV Testing Knowledge
Lack of Perceived Need or Urgency for PrEP	Lack of Perceived Need or Urgency for HIV Testing
PrEP Mistrust and Concerns	HIV Testing Mistrust and Concerns
PrEP Stigma	HIV Testing Stigma
Lack of Culturally Competent PrEP Outreach	Lack Of Culturally Competent HIV Testing Outreach
Negative PrEP Provider Demeanor	Negative HIV Testing Provider Demeanor
Clinic and Medical System Issues for PrEP	Clinic and Medical System Issues for HIV Testing
PrEP Privacy Concerns	HIV Testing Privacy Concerns
PrEP Cost and Insurance Issues	HIV Testing Cost and Insurance Issues
Language/Immigration Concerns	Language/Immigration Concerns
<i>PrEP Use Facilitator Scales</i>	<i>HIV Testing Facilitator Scales</i>
PrEP Knowledge	HIV Testing Knowledge
Perceived Benefits of PrEP	Perceived Benefits of HIV Testing
PrEP is Normalized	HIV Testing is Normalized
Culturally Competent PrEP Providers and Outreach	Culturally Competent HIV Testing Outreach
PrEP Navigation Support	HIV Testing Navigation Support
Positive PrEP Provider Demeanor	Positive HIV Testing Provider Demeanor
PrEP Affordability	HIV Testing Affordability

Grant No. U54MD002266

Lozano, A., et al., [Am J Health Promot.](#) 2024



Sociodemographic Disparities and Geographic Availability of COVID-19 Treatments

- COVID-19 treatment at health care sites from the COVID-19 Public Therapeutic Locator. Spatial clusters of counties with available drugs identified.
- **Less access to treatments: Counties with high poverty and uninsured rates, individuals with high social vulnerability scores and COVID-19 community vulnerability scores, and counties with high proportion of Black individuals**
- ✓ *Sociodemographic disparities in access to COVID-19 treatments based on geographic availability highlight an important gap across U.S. counties.*

Grant No. ZIA MD000020

Shishkov, A., Tamura, K., et al., [JAMA Network Open](#). 2023



Cultural Adaptations Improve Retention and Engagement in Smoking Cessation Treatment

- Latino and White users of Smokefree.gov text messaging
- Data on 1,562 Latino users of SmokefreeTXT en Español (SFTXTesp)—adapted for Latino smokers—and 8,418 White and 2,301 Latino users of SmokefreeTXT (SFTXT)
- **SFTXTesp improved retention and engagement among Latino users but did not affect abstinence**
- **Latino users of both formats had higher retention but lower engagement and abstinence rates than Whites**
- ✓ *Cultural adaptations of text messaging smoking cessation interventions improve retention and engagement among Latinos who smoke compared to only linguistic interventions.*



Trends in U.S. Adolescent Suicide by Method, 1999-2020

- National death certificate data of 47,217 adolescent (aged 10-19 years) suicide decedents from the National Center for Health Statistics from 1999 to 2020
 - **Suicide rates increased across all methods. Firearm suicide rates increased among all race and ethnicity.**
 - **Black adolescents had the highest average increase in hanging and asphyxiation suicides.**
 - **From 2011-2020, poisoning suicide deaths increased among females**
- ✓ *Increasing suicide rates among all youth are concerning, and effective prevention strategies are urgently needed*

Grant No. ZIA MD000015

Ormiston, C. K., Williams, F. [JAMA Network Open](#). 2024.



DIR Awards and Honors

Jinani Jayasekera, Ph.D., Stadtman Investigator

- Honored at 2024 Marvin Zelen Symposium, Dana Farber Cancer Institute
- *“Personalized clinical decision tools to support equitable breast cancer care”*



Katie Wojcik, Postbac Fellow

- Finalist for 45th Annual Meeting of the Society of Medical Decision Making
- *“Simulation modeling the long-term effects of omitting chemotherapy guided by a 21-gene expression assay in node-positive breast cancer”*
- *“A scoping review of web-based, interactive, personalized clinical decision tools designed to support breast cancer treatment and survivorship care”*



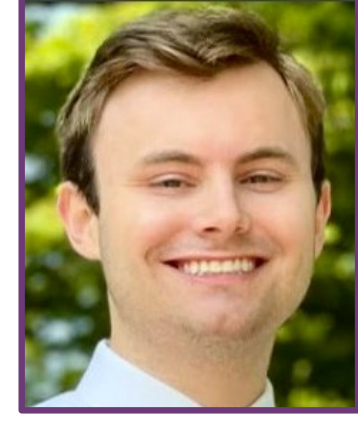
Erin Liedtke and Melanie Sona, Postbac Fellows

- Recognized in American Public Health Association Emerging Scholars Section
- *“Fostering a healthy nation, one neighborhood at a time: Insights from our podcast”*



2024 NIH Post-Baccalaureate Poster Day

NIMHD Research Trainees



Post-baccalaureate Presenters:

Top Row: Erin Liedtke, Breanna Rogers, Katie Wojcik, Melanie Sona, Ruth Hailemeskel

Bottom Row: Sydney Barlow, Maryam Elhabashy, Vincent Lam, Ayesha Azeem, Michael Wakeman



NIMHD Vacancy Announcements

JOIN OUR AMAZING TEAM!

NIMHD seeks outstanding candidates to support our vision of an America in which all populations have an equal opportunity to live long, healthy and productive lives.

Learn more at <https://nimhd.nih.gov/about/employment.html>



<https://nimhd.nih.gov/about/employment.html>



National Institute
on Minority Health
and Health Disparities



Connect With NIMHD



Visit us online www.nimhd.nih.gov



Connect with us on Facebook
www.facebook.com/NIMHD



Follow us on X
[@NIMHD](https://twitter.com/NIMHD)



Join us on [linkedin.com/company/nimhd-nih/](https://www.linkedin.com/company/nimhd-nih/)



Sign up for news
<https://public.govdelivery.com/accounts/US-NIH/NIMHD/subscriber/new>



National Institute
on Minority Health
and Health Disparities



Discussion



National Institute
on Minority Health
and Health Disparities

