

Disparities and Dynamics: A Life Course Approach to Work and Health in Later Adulthood

Phyllis Moen, Sarah Flood, and Joseph Pedtke

Life Course Center - U. of Minnesota

September 21, 2020

Presentation at

**Role of Work in Health Disparities in the US
Workshop**

National Institute on Minority Health and Health Disparities

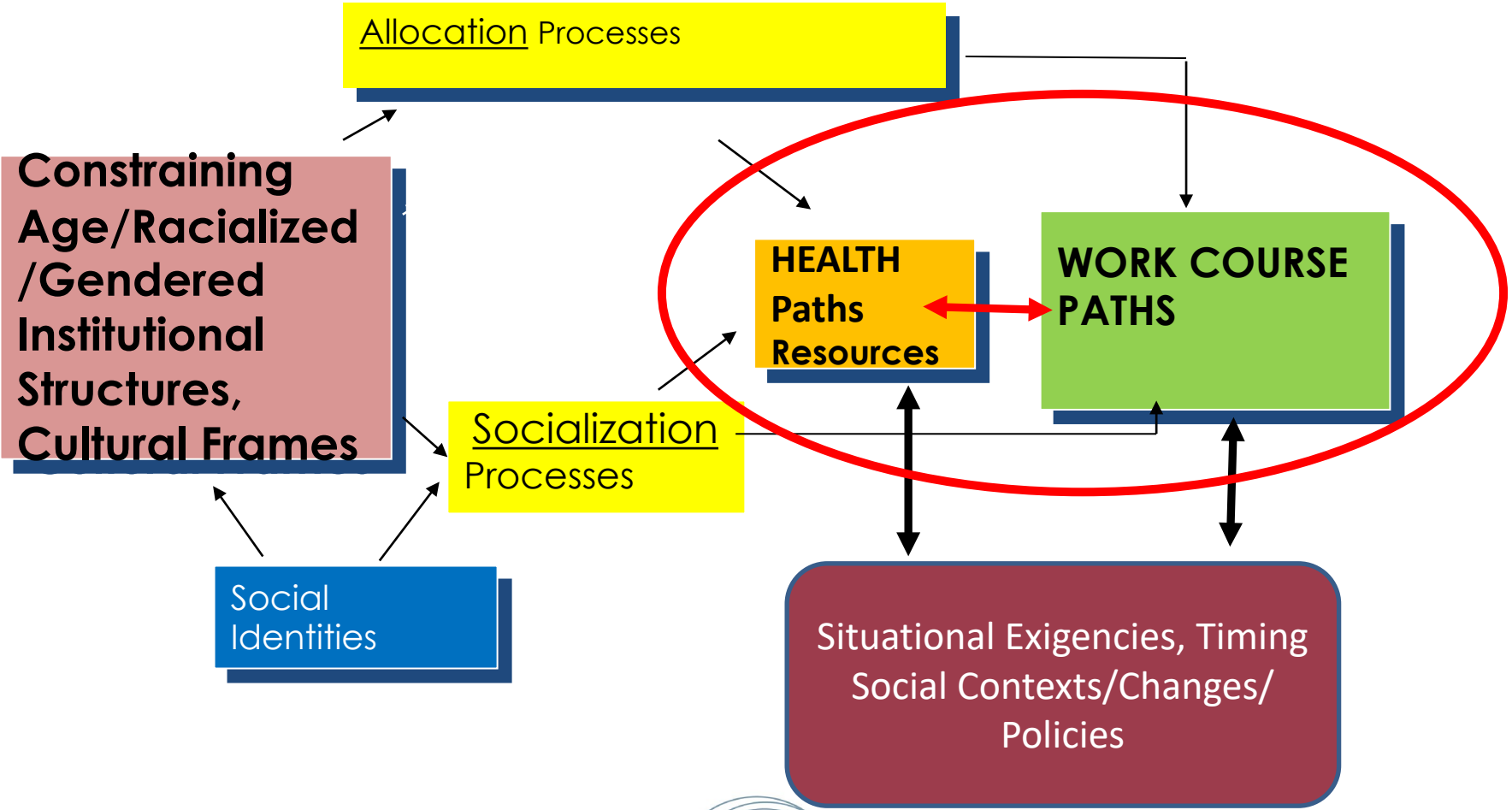
Support from National Science Foundation (1850914); Life Course Center((NIA
1P30AG066613); Minnesota Population Center (P2C HD041023), and IPUMS CPS
(R01HD067258),



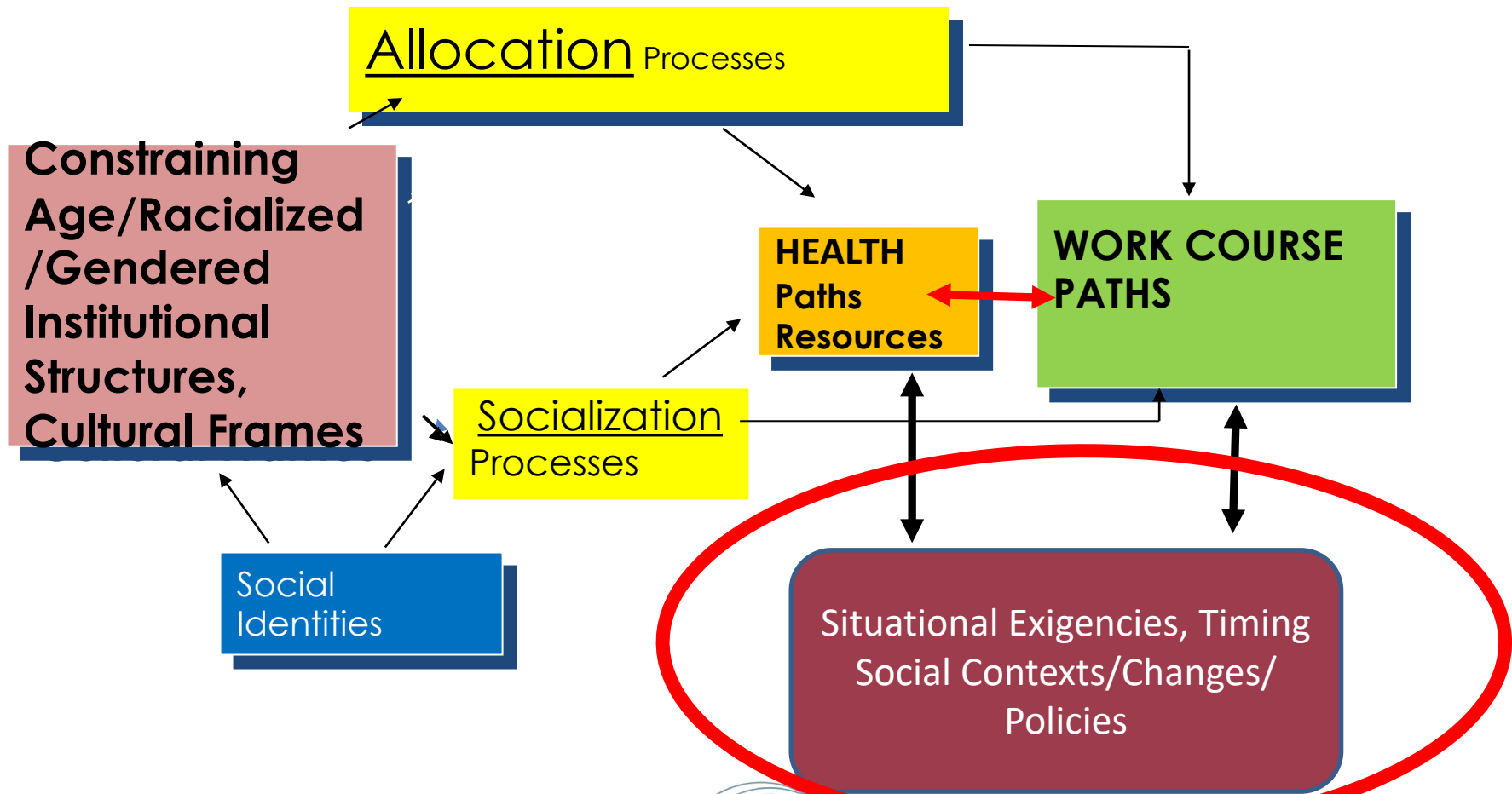
UNIVERSITY OF MINNESOTA



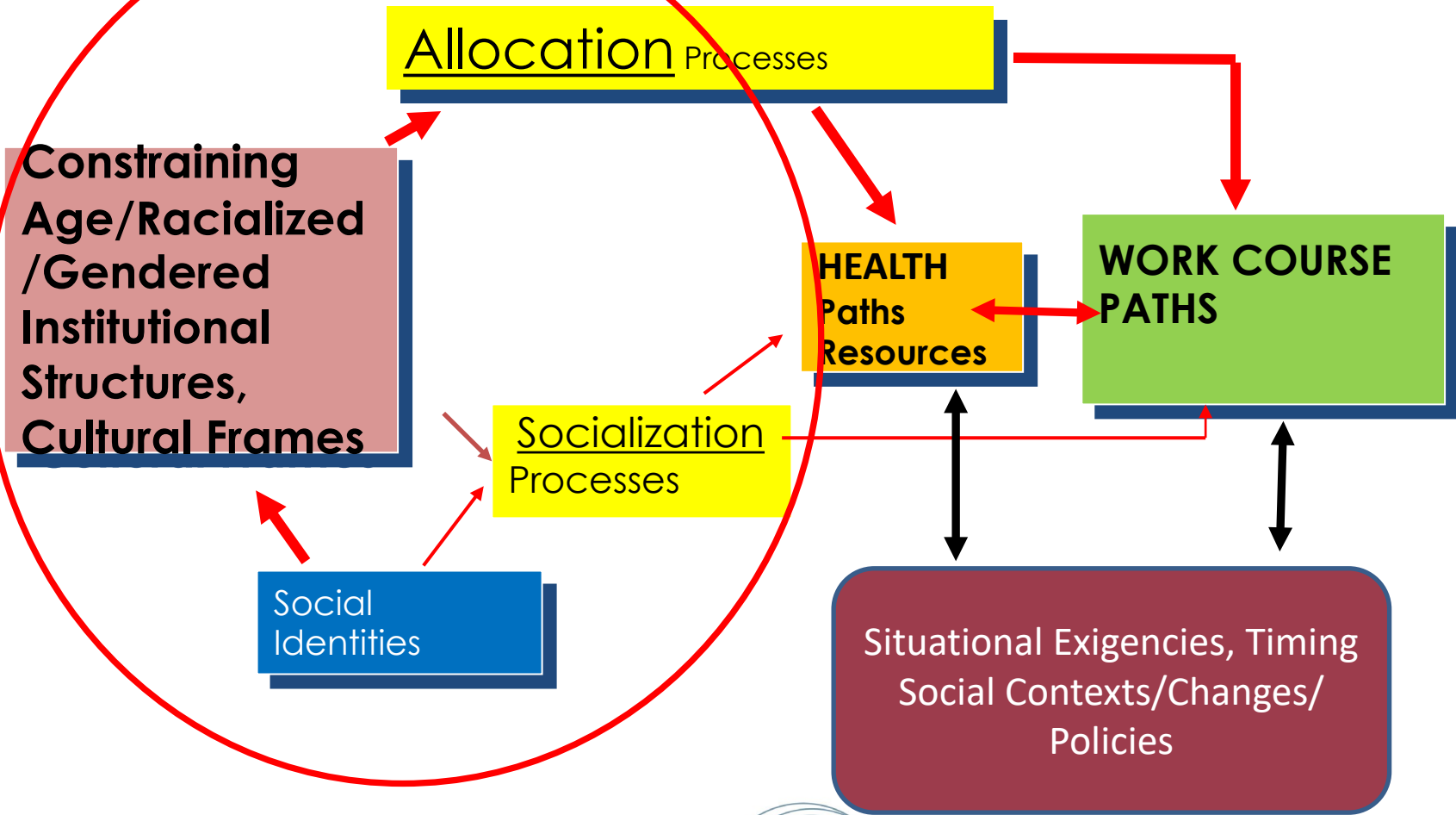
Constrained Choice: Life Course Contexts and Dynamics of Work and Health



Constrained Choice: Life Course Contexts and Dynamics of Work and Health



Constrained Choice: Life Course Contexts and Dynamics of Work and Health



Disparities and Dynamics in COVID-19 effects

Cross-Sectional CPS Data Ages 50-59

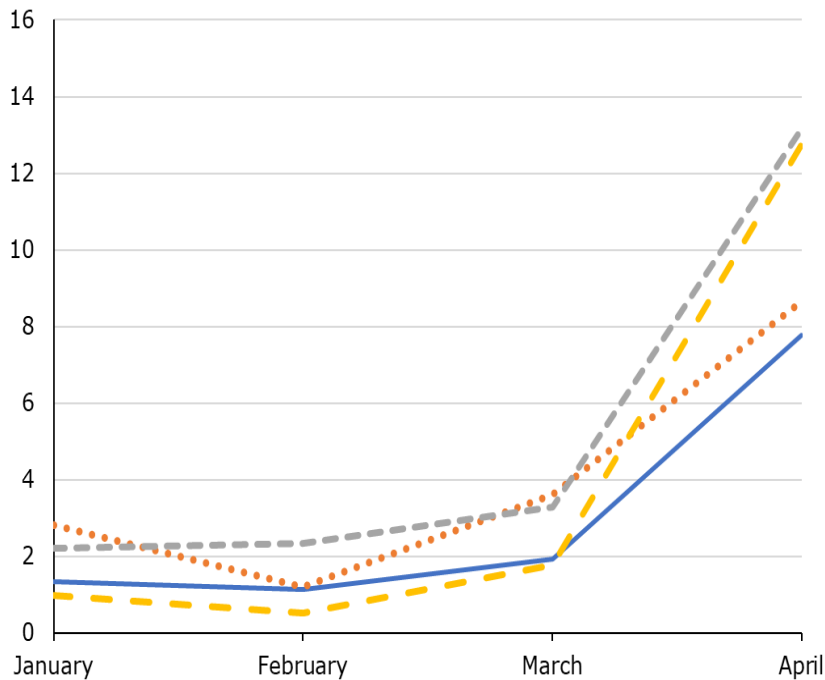


COVID Effects, Unemployment in the 50s

(Moen et al, 2020 *Work, Aging, & Retirement*)

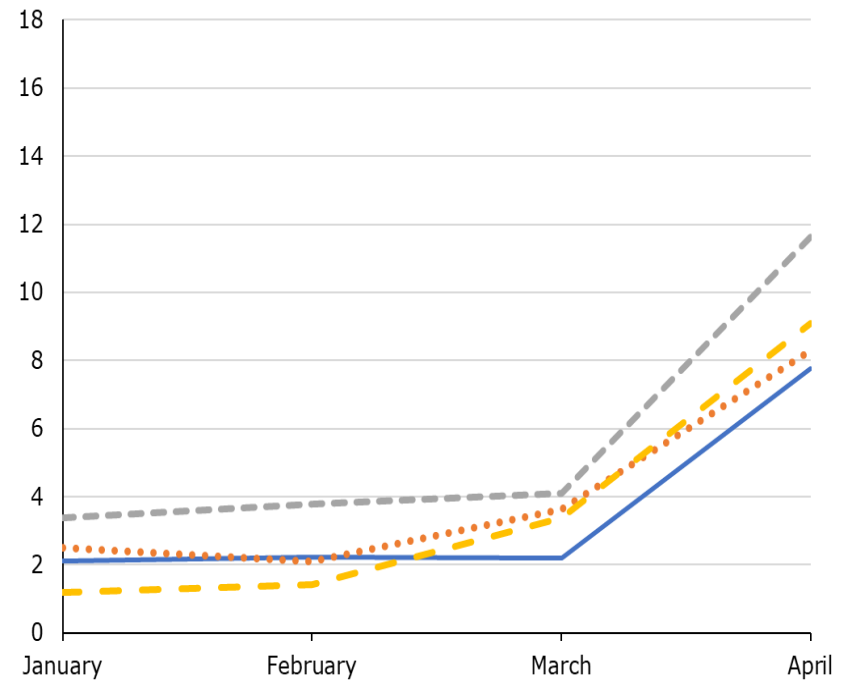
Women aged 50-59 - Unemployed

— White ••• Black - - - Hispanic - - - Asian



Men aged 50-59 - Unemployed

— White ••• Black - - - Hispanic - - - Asian

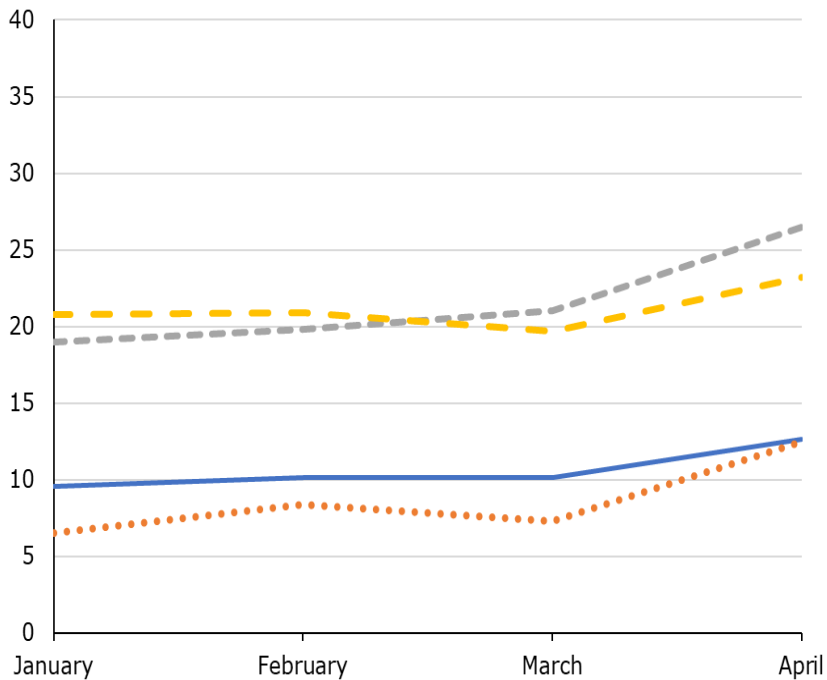


COVID Effects, NILF, Other Reasons (50s)

(Moen et al, 2020 *Work, Aging, & Retirement*)

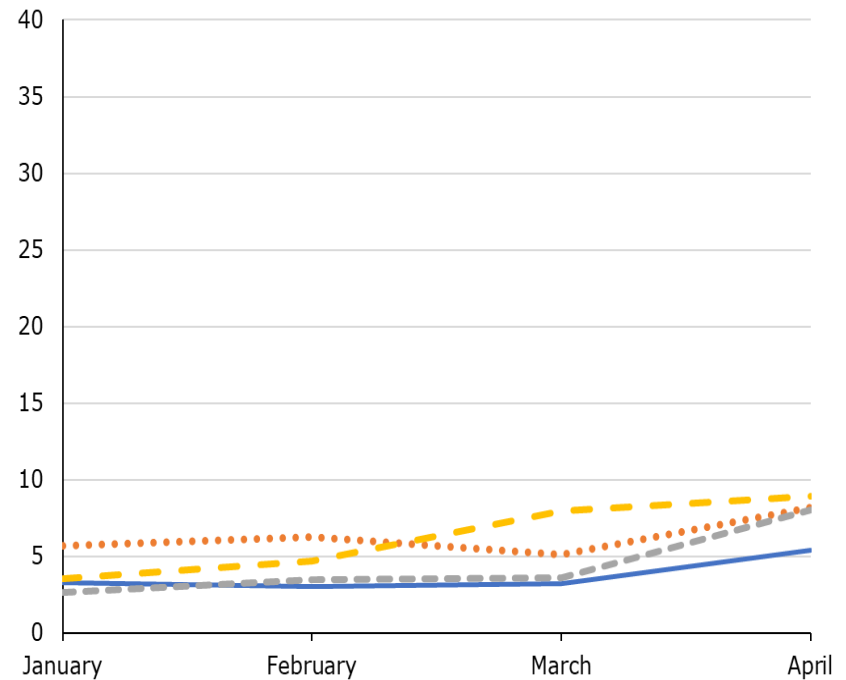
Women aged 50-59 - NILF other

— White ••• Black - - - Hispanic - - - Asian



Men aged 50-59 - NILF other

— White ••• Black - - - Hispanic - - - Asian

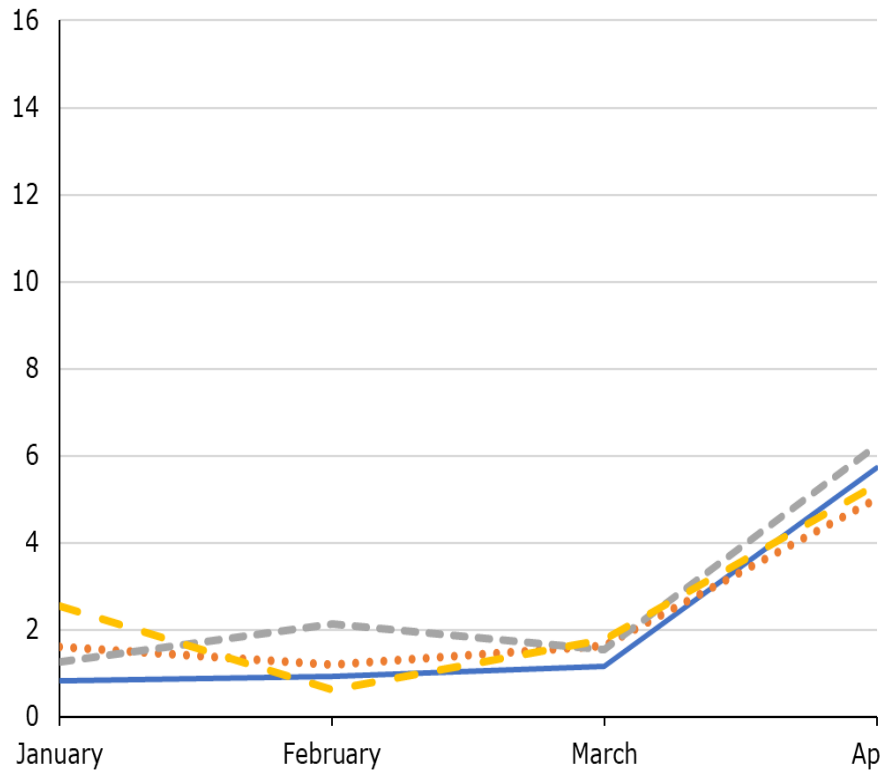


COVID Effects, Unemployment in the 60s

(Moen et al, 2020 *Work, Aging, & Retirement*)

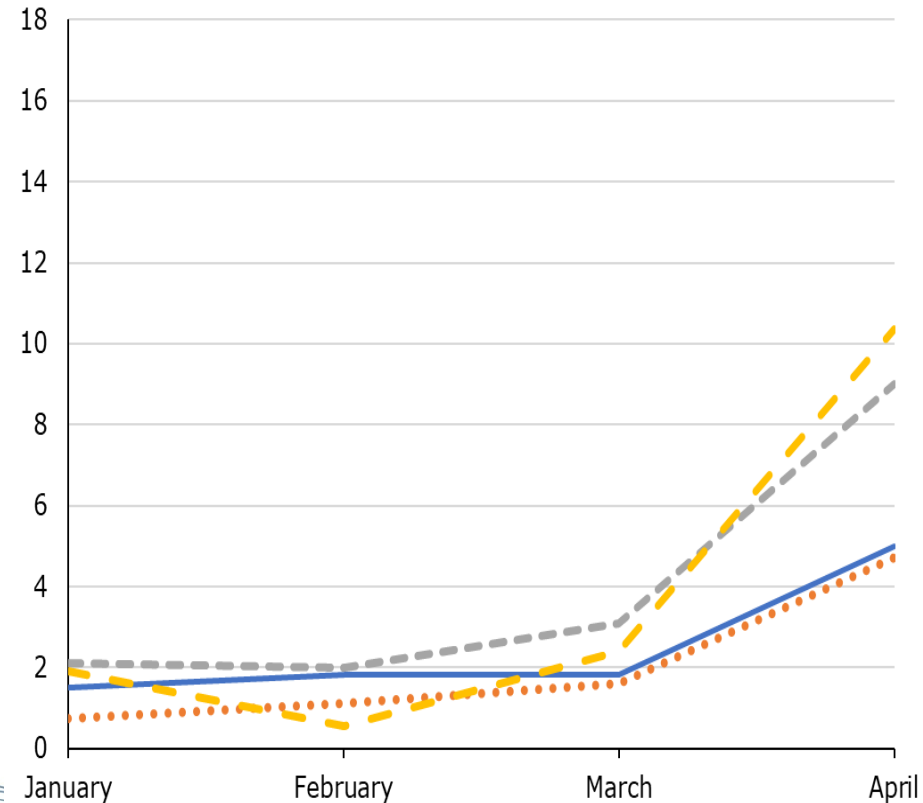
Women aged 60-69 - Unemployed

— White ••• Black - - - Hispanic - - - Asian



Men aged 60-69 - Unemployed

— White ••• Black - - - Hispanic - - - Asian

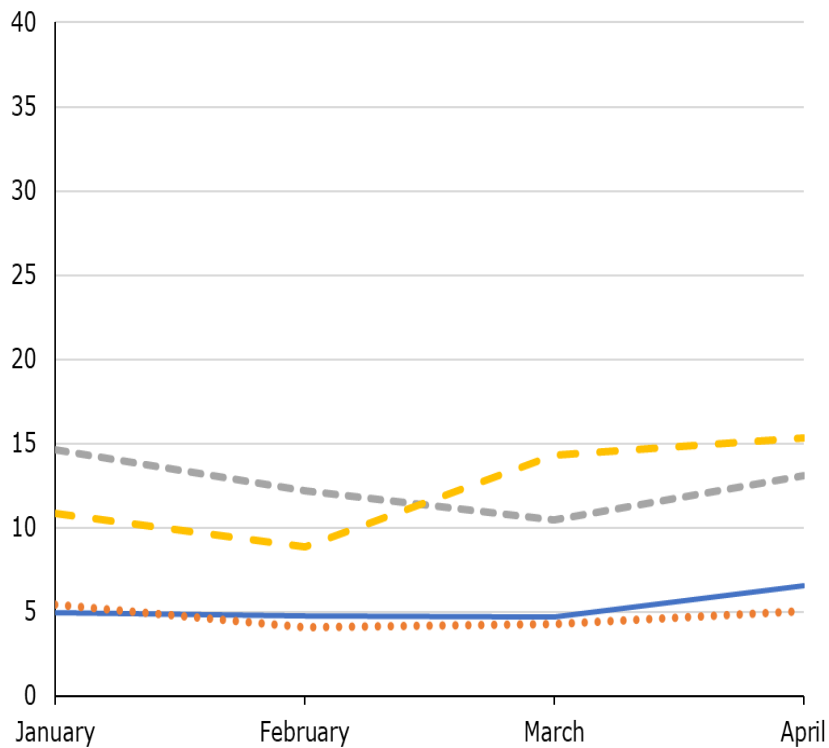


COVID Effects, NILF, Other Reasons (60s)

(Moen et al, 2020 *Work, Aging, & Retirement*)

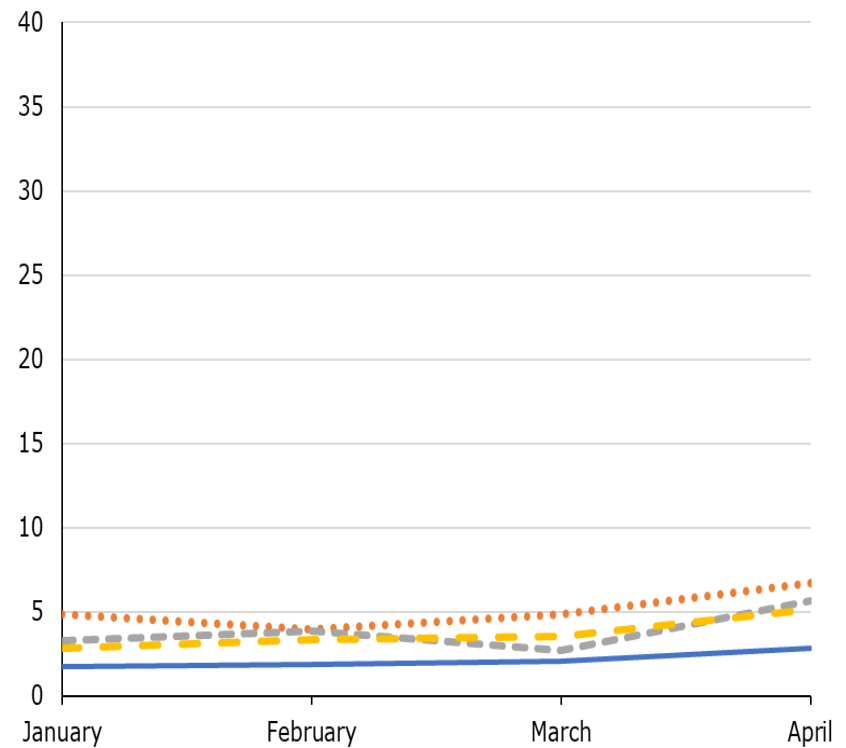
Women aged 60-69 - NILF other

— White ●●● Black - - - Hispanic - - - Asian



Men aged 60-69 - NILF other

— White ●●● Black - - - Hispanic - - - Asian

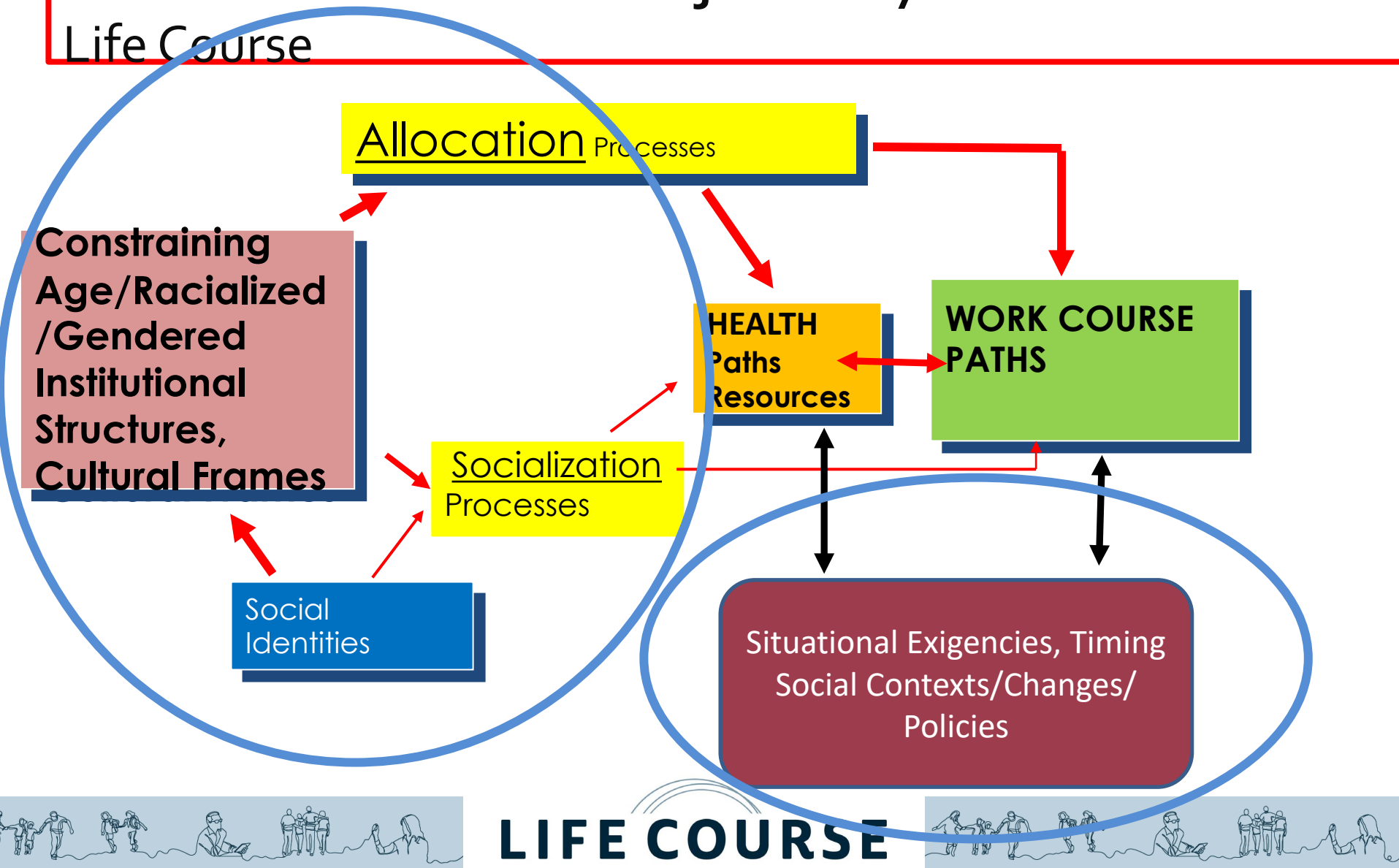


Implications for Future Research Priorities

- **Intersectional Approach** -- GENDER, RACE, CLASS but also AGE (**Need Large or Targeted Samples and Person-Centered Analyses**)
- **Transitions and Trajectories** – capturing **dynamics** of health/work interface over time
 - **Cumulative Dis/advantages** – Who is NOT working earlier in the life course? Who leaves work? Who has prior health difficulties or onset of health conditions? Who retains/gains good health? (**Need Panel Data**)
- **Contexts**
 - Systems of Inequality Shaping Paths, Possibilities
 - Transformative Demographic, Technological, Public Health, Economic, and Policy Contexts (**Need Recent Data; Natural Experiments**)
 - Personal Family Exigencies (**Need couple/household Data**)
- **Constrained Choices** – **voluntary/involuntary work paths**, (timing, exits, (re)entries); **voluntary/involuntary working conditions** (**Need Subjective Measures**)



Constrained Choice and **Conjoined Dynamics** Across the Life Course



Thank you!



UNIVERSITY OF MINNESOTA